

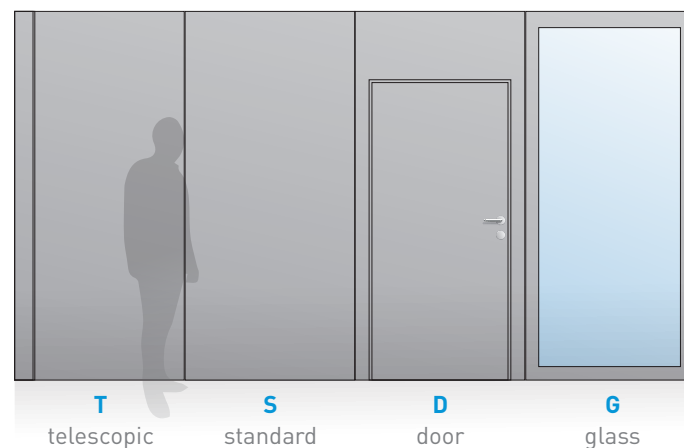


Vacuwall® is the only really mobile wall.
No need for visible adjustments of ceilings and floors, therefore no loading of the ceiling constructions.
Locking system between modules and floor/ceiling support using bags.

Thanks to the patented system, moving the walls just takes a few minutes.



TYPES OF PANELS



TECHNICAL SPECIFICATIONS

BASIC INFORMATION:

Easy-to-move:	made up of individual panels
Control:	button/pump
Stability:	secured with locks between the panels
Structure:	light and stable
Standard surface:	white/grey laminated chipboard
Surface weight:	approx. 22 kg/m ²

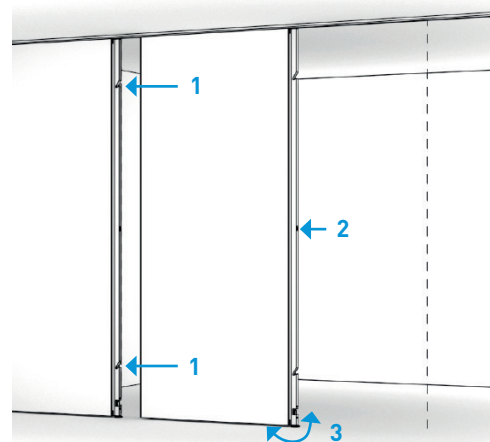
AIRBORNE SOUND INSULATION Rw:

Full panel:	39 dB
-------------	-------

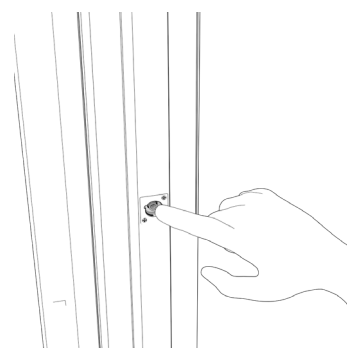
STANDARD PANEL DIMENSIONS:

Thickness:	100 mm
Width:	800 mm
Height:	max. 4,000 mm
Door panel width:	1,030 mm (880 mm light passage)

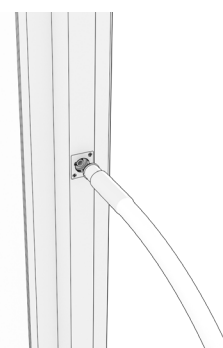
PANEL INSTALLATION



PANEL FIXATION

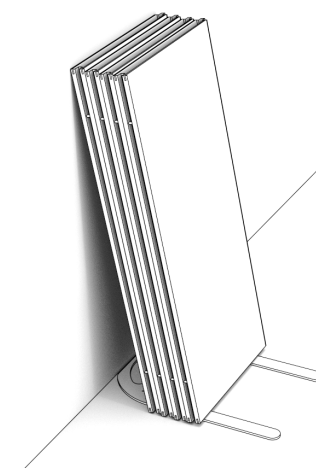


PANEL RELEASE

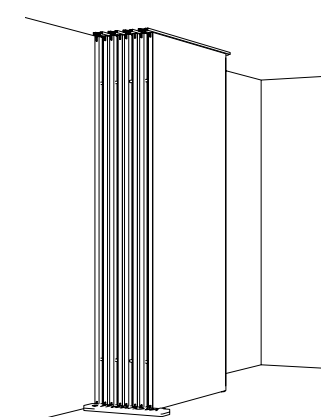


TYPES OF SLIDING-PARKING PANELS

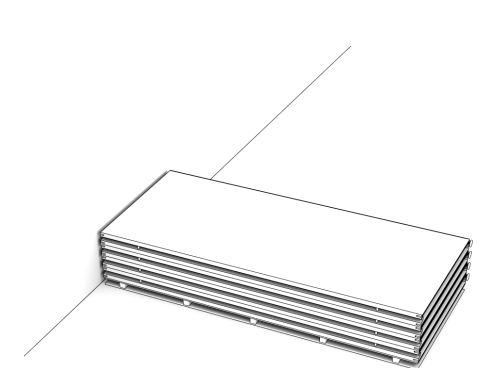
01 | Leaning against a wall by using a provided stand



02 | Bracing between the floor and ceiling by using a provided ceiling and floor stand

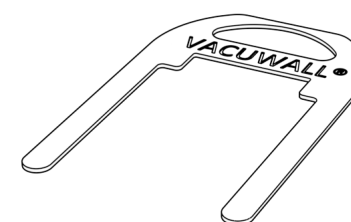


03 | On a pallet in a horizontal position (max. 8 panels stacked)



OPTIONAL ACCESSORIES

PARKING TYPE 01
(between the floor and ceiling)



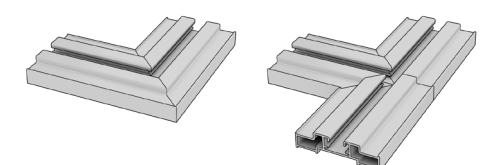
PARKING TYPE 02
(leaning against a wall)



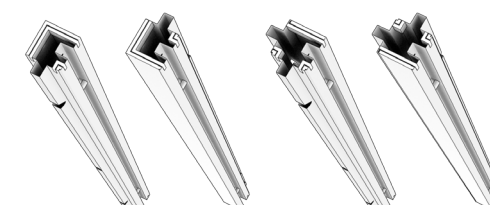
HANDLING CART



CEILING PROFILE CONNECTION



PROFILES
(L-profile / T-profile | right / left)





Headquarters:

LIKO-S, a.s.
U Splavu 1419
684 01 Slavkov u Brna
Czech Republic

+420 5 44 22 11 11 | info@liko-s.com

www.liko-s.com

Become one of our fans and be part of the story...



FACEBOOK



YOUTUBE



LINKEDIN